

1-877-903-7246



www.trenchdrainsupply.com

## ULM100 Complete Kit

Series

**ULM100**

Cover Sheet

Ulma MultiV100

### 4" Wide Multi V 100 Ductile Iron Edge Polymer Concrete Sloped Trench Drain Kit



### Polymer Concrete Sloped Trench Drain Kit Integrated Ductile Iron Edge

#### Complete Kit Includes:

**Specified # of 1 Meter Trench Drain Channels**

**Specified # of 1/2 Meter Grates  
(D Class Ductile Iron Standard)  
with Integrated Locks**

**1 - Outlet End Cap**

**1 - Solid End Cap**



1-877-903-7246



www.trenchdrainsupply.com

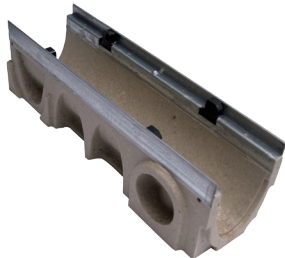
<p><b>Number</b></p> <p><b>R100MFGxx Channel</b></p>	<p><b>Series</b></p> <p><b>ULM100</b></p> <p>Trench Drain Channel</p> <p>MultiV100 - Ductile Iron Edge</p>
<div data-bbox="162 420 1461 1575"> <p>Optimized V-shaped section</p> <p>5 3/8"</p> <p>4"</p> <p>3/4"</p> <p>Vertical outlet preform ø 4 3/8"</p> <p>Groove for sealing joint</p> <p>3 1/2"</p> <p>39 3/8"</p> <p>Ductile Iron edge</p> <p>8 locking points per linear meter</p> <p>h</p> <p>a</p> <p>b</p> <p>R100</p> <p>TG 10R</p> <p>EN1433</p> <p>TYPE M</p> <p>D400</p> <p>CE</p> <p>ULMA</p> </div>	
<p><b>Manufacturer</b></p>	<p><b>Specification</b></p> <p>ULMA Linear Drainage Channel, type MULTIV+ R100G; Ext width 5 3/8" mm, Internal width 4" with overall heights between 4" and 11"; suitable for cascade-type slopes to collect rainwater; sections 39 3/8" length; optimized V-shape with self-cleaning effect; Ductile Iron edges for lateral protection; Rapidlock® boltless system.</p>
<p>DISCLAIMER - The customer and the customer's architects, engineers, consultants, and other professionals are completely responsible for the selection installation and maintenance of any product purchased from Trench Drain Supply and/or its manufacturers. TRENCH DRAIN SUPPLY MAKES NO WARRANTY, EXPRESS OR IMPLIED, AS TO THE SUITABILITY, DESIGN, MERCHANTABILITY, OR FITNESS OF THE PRODUCT FOR CUSTOMERS APPLICATION. The drawing and information provided remain the property and copyright of the manufacturer listed. The manufacturer reserves the right to modify specification without notice.</p>	

1-877-903-7246



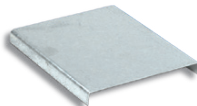
www.trenchdrainsupply.com

Number	Series
<b>R100MFGxx Dimensions</b>	<b>ULM100</b> Trench Drain Specs MultiV100 - Ductile Edge

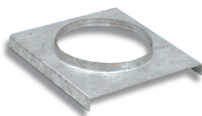


**\*\*Discontinued\*\***

Closed



Open



FAST, BOLTLESS SAFETY  
LOCKING 8 fastening points  
per linear meter.

**rapidlock®**

**Manufacturer**



**MULTIV+100**

Channel reference:	Total height		Internal height		Hydraulic section (in <sup>2</sup> )	Ø outlet(mm)	
	h (in)	H (in)	a (in)	b (in)		Vert.	Horiz.
R100MFG00R	3.94	3.94	2.44	2.44	08.68	110	-
R100MFG01	3.94	4.13	2.44	2.63	09.44	110	-
R100MFG02	4.13	4.33	2.63	2.83	09.97	110	-
R100MFG03	4.33	4.53	2.83	3.03	10.49	110	-
R100MFG04	4.53	4.72	3.03	3.23	11.02	110	-
R100MFG05	4.72	4.92	3.23	3.43	11.55	110	-
R100MFG06	4.92	5.12	3.43	3.62	12.07	110	-
R100MFG07	5.12	5.31	3.62	3.82	12.60	110	-
R100MFG08	5.31	5.51	3.82	4.02	13.13	110	-
R100MFG09	5.51	5.71	4.02	4.21	13.66	110	-
<del>R100MFG10</del>	<del>5.71</del>	<del>5.91</del>	<del>4.21</del>	<del>4.41</del>	<del>14.18</del>	<del>110</del>	<del>-</del>
R100MFG10R	5.91	5.91	4.41	4.41	14.18	110	-
R100MFG11	5.91	6.10	4.41	4.61	14.96	110	-
R100MFG12	6.10	6.30	4.61	4.80	15.59	110	-
R100MFG13	6.30	6.49	4.80	5.00	16.21	110	-
R100MFG14	6.49	6.69	5.00	5.20	16.85	110	-
R100MFG15	6.69	6.89	5.20	5.39	17.47	110	-
R100MFG16	6.89	7.09	5.39	5.59	18.11	110	-
R100MFG17	7.09	7.28	5.59	5.79	18.72	110	-
R100MFG18	7.28	7.48	5.79	5.98	19.69	110	-
R100MFG19	7.48	7.68	5.98	6.18	19.98	110	-
R100MFG20	7.68	7.87	6.18	6.38	20.62	110	-
R100MFG20R	7.87	7.87	6.38	6.38	20.62	110	-
R100MFG21	7.87	8.07	6.38	6.58	21.28	110	-
R100MFG22	8.07	8.27	6.58	6.77	21.95	110	-
R100MFG23	8.27	8.46	6.77	6.97	22.61	110	-
R100MFG24	8.46	8.66	6.97	7.16	23.28	110	-
R100MFG25	8.66	8.86	7.16	7.37	23.95	110	-
R100MFG26	8.86	9.06	7.37	7.56	24.61	110	-
R100MFG27	9.06	9.25	7.56	7.76	25.28	110	-
R100MFG28	9.25	9.45	7.76	7.95	25.95	110	-
R100MFG29	9.45	9.65	7.95	8.15	26.61	110	-
R100MFG30	9.65	9.84	8.15	8.35	27.78	110	-
R100MFG30R	9.84	9.84	8.35	8.35	27.78	110	-
R100MFG40R	11.81	11.81	10.31	10.31	34.10	110	-

DISCLAIMER - The customer and the customer's architects, engineers, consultants, and other professionals are completely responsible for the selection installation and maintenance of any product purchased from Trench Drain Supply and/or its manufacturers. TRENCH DRAIN SUPPLY MAKES NO WARRANTY, EXPRESS OR IMPLIED, AS TO THE SUITABILITY, DESIGN, MERCHANTABILITY, OR FITNESS OF THE PRODUCT FOR CUSTOMERS APPLICATION. The drawing and information provided remain the property and copyright of the manufacturer listed. The manufacturer reserves the right to modify specification without notice.

1-877-903-7246



www.trenchdrainsupply.com

<p><b>Number</b></p> <p><b>FNHX100RGDM</b></p>	<p><b>Series</b></p> <p><b>ULM100</b></p> <p>D Class Ductile Iron ADA Grate</p> <p>MultiV100</p>
<div data-bbox="198 369 456 701"> </div> <div data-bbox="272 783 386 816"> <p>D Class</p> </div> <div data-bbox="1170 407 1292 793"> </div> <div data-bbox="138 888 1510 1390"> <p>.31"</p> <p>.78"</p> <p>1.40"</p> <p>1.77"</p> <p>5"</p> <p>8 fixing points per 1m</p> <p>Ridges and grooves at 45 degrees to divert water</p> </div>	
<p><b>Manufacturer</b></p> <div data-bbox="204 1709 592 1810"> </div>	<p><b>Specification</b></p> <p>ULMA MULTIV100 SERIES ADA GRATE. LOAD CLASS D400 EN 1433 STANDARD. ADA AND HEELPROOF. CASTED ESPHERIODAL GRAPHITE DUCTILE IRON, EN 1563 STANDARD. BOLTLESS RAPIDLOCK LOCKING SYSTEM SUPPLIED BY TRENCH DRAIN SUPPLY.</p>
<p>DISCLAIMER - The customer and the customer's architects, engineers, consultants, and other professionals are completely responsible for the selection installation and maintenance of any product purchased from Trench Drain Supply and/or its manufacturers. TRENCH DRAIN SUPPLY MAKES NO WARRANTY, EXPRESS OR IMPLIED, AS TO THE SUITABILITY, DESIGN, MERCHANTABILITY, OR FITNESS OF THE PRODUCT FOR CUSTOMERS APPLICATION. The drawing and information provided remain the property and copyright of the manufacturer listed. The manufacturer reserves the right to modify specification without notice.</p>	

1-877-903-7246

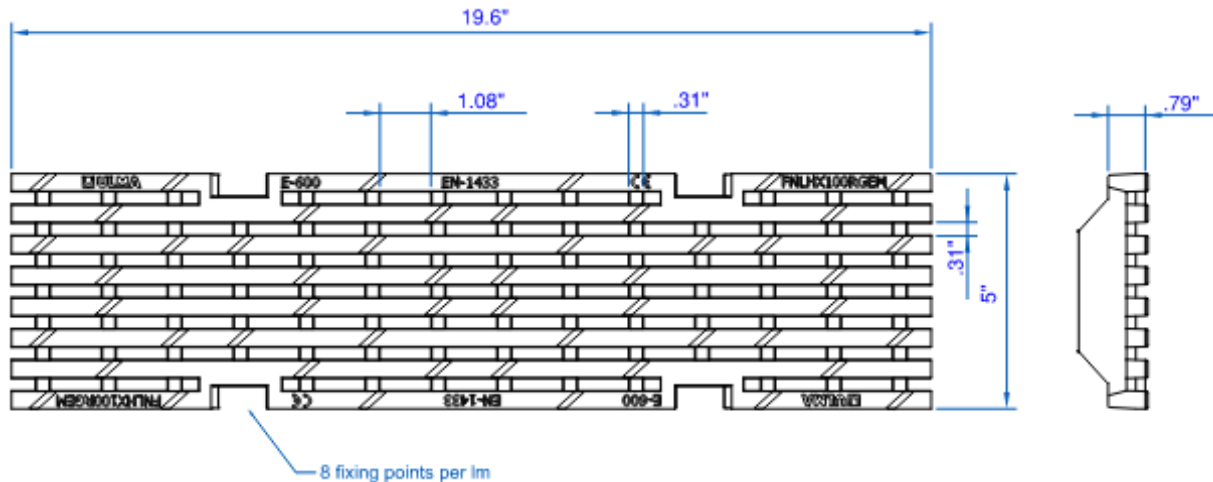



www.trenchdrainsupply.com

Number <b>FNLHX100RGEM</b>	Series <b>ULM100</b> E Ductile Cast Iron Slotted
-------------------------------	--



PART NUMBER	DIMENSIONS	FREE AREA
FNLHX100RGEM	19.6" [498MM]	51.35 SQ. IN.



Manufacturer 	Specification ULMA FNLHX100RGEM DUCTILE CAST IRON SLOTTED TRENCH DRAIN GRATE WITH CLASS E LOAD RATING (169,800 LBS.—5700 PSI), SUPPLIED BY TRENCH DRAIN SUPPLY
---	---

DISCLAIMER - The customer and the customer's architects, engineers, consultants, and other professionals are completely responsible for the selection installation and maintenance of any product purchased from Trench Drain Supply and/or its manufacturers. TRENCH DRAIN SUPPLY MAKES NO WARRANTY, EXPRESS OR IMPLIED, AS TO THE SUITABILITY, DESIGN, MERCHANTABILITY, OR FITNESS OF THE PRODUCT FOR CUSTOMERS APPLICATION. The drawing and information provided remain the property and copyright of the manufacturer listed. The manufacturer reserves the right to modify specification without notice.



1-877-903-7246

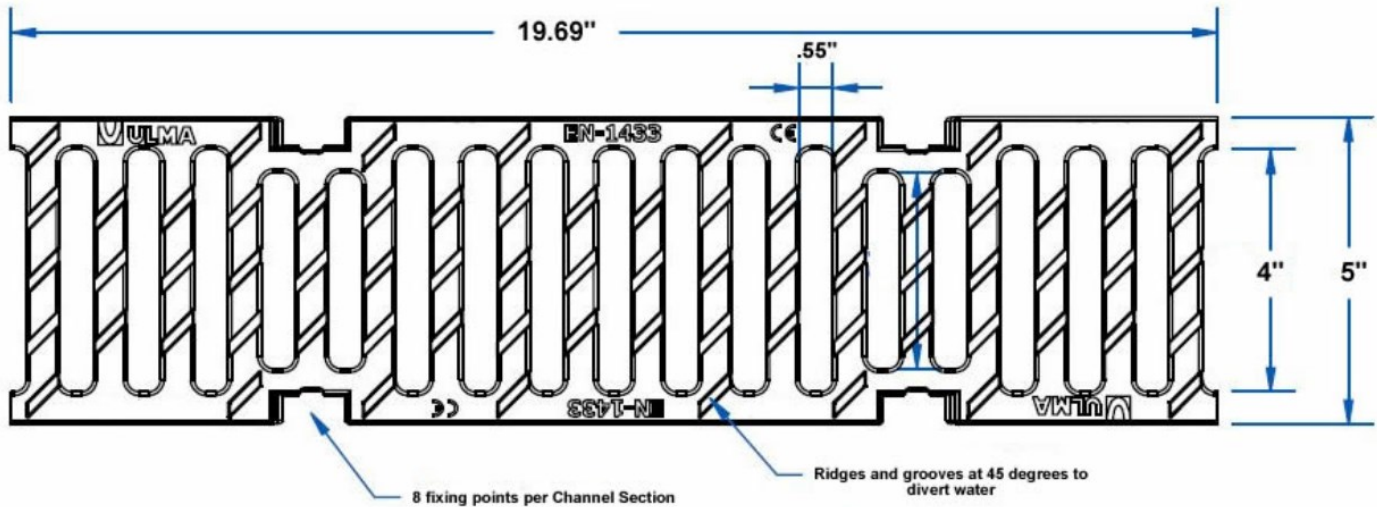
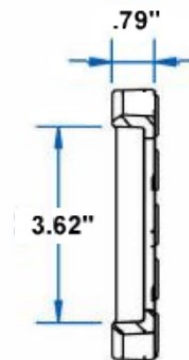



www.trenchdrainsupply.com

Number <b>FNX100RGEM</b>	Series <b>MULTIV 100</b> E Ductile Cast Iron Slotted
-----------------------------	--



PART NUMBER	DIMENSIONS	FREE AREA
FNX100RGEM	19.6" [498MM]	63.24 SQ. IN.



<b>Manufacturer</b>  	<b>Specification</b>  ULMA FNX100RGEM DUCTILE CAST IRON SLOTTED TRENCH DRAIN GRATE WITH CLASS E LOAD RATING (136,800 LBS.—5700 PSI), SUPPLIED BY TRENCH DRAIN SUPPLY
--	---

DISCLAIMER - The customer and the customer's architects, engineers, consultants, and other professionals are completely responsible for the selection installation and maintenance of any product purchased from Trench Drain Supply and/or its manufacturers. TRENCH DRAIN SUPPLY MAKES NO WARRANTY, EXPRESS OR IMPLIED, AS TO THE SUITABILITY, DESIGN, MERCHANTABILITY, OR FITNESS OF THE PRODUCT FOR CUSTOMERS APPLICATION. The drawing and information provided remain the property and copyright of the manufacturer listed. The manufacturer reserves the right to modify specification without notice.

1-877-903-7246



www.trenchdrainsupply.com

<p><b>Number</b></p> <p><b>PNHX100RGCM</b></p>	<p><b>Series</b></p> <p><b>ULM100</b></p> <p>C Class Composite ADA Grate</p> <p>MultiV100</p>
<div data-bbox="305 394 581 768" data-label="Image"> </div> <p data-bbox="386 800 493 831">C Class</p> <div data-bbox="1117 394 1344 821" data-label="Image"> </div> <div data-bbox="126 905 1495 1518" data-label="Image"> </div>	
<p><b>Manufacturer</b></p> <div data-bbox="207 1713 594 1812" data-label="Image"> </div>	<p><b>Specification</b></p> <p>ULMA MULTIV100 SERIES ADA COMPOSITE GRATE. LOAD CLASS C250 EN 1433 STANDARD. ADA AND HEELPROOF. BOLTLESS RAPIDLOCK LOCKING SYSTEM . SUPPLIED BY TRENCH DRAIN SUPPLY.</p>
<p>DISCLAIMER - The customer and the customer's architects, engineers, consultants, and other professionals are completely responsible for the selection installation and maintenance of any product purchased from Trench Drain Supply and/or its manufacturers. TRENCH DRAIN SUPPLY MAKES NO WARRANTY, EXPRESS OR IMPLIED, AS TO THE SUITABILITY, DESIGN, MERCHANTABILITY, OR FITNESS OF THE PRODUCT FOR CUSTOMERS APPLICATION. The drawing and information provided remain the property and copyright of the manufacturer listed. The manufacturer reserves the right to modify specification without notice.</p>	